

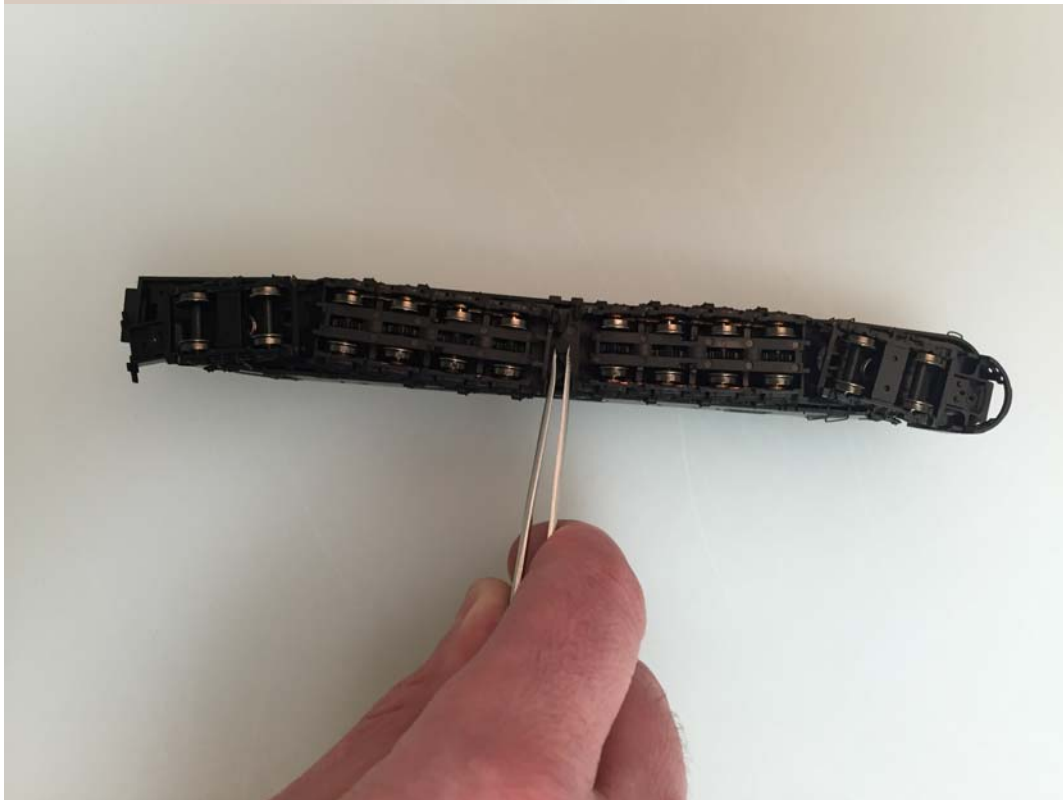
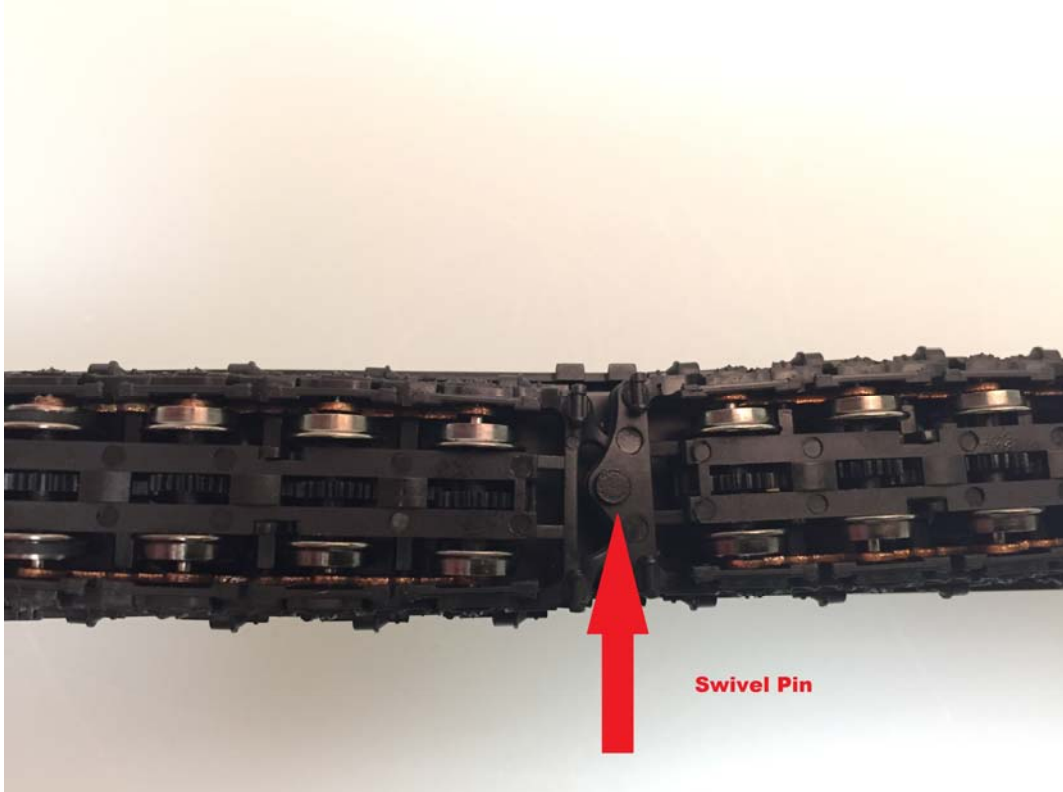


## N Scale Centipede Traction-Tired Driver Installation and Side Frame Removal



**Step 1:**

Remove the swivel pin located in the center of the front and rear trucks.  
(Careful, these tend to “pop-off” and fly away easily!)



**Step 2:**

Swivel the trucks so that they can be separated as shown in the photo.



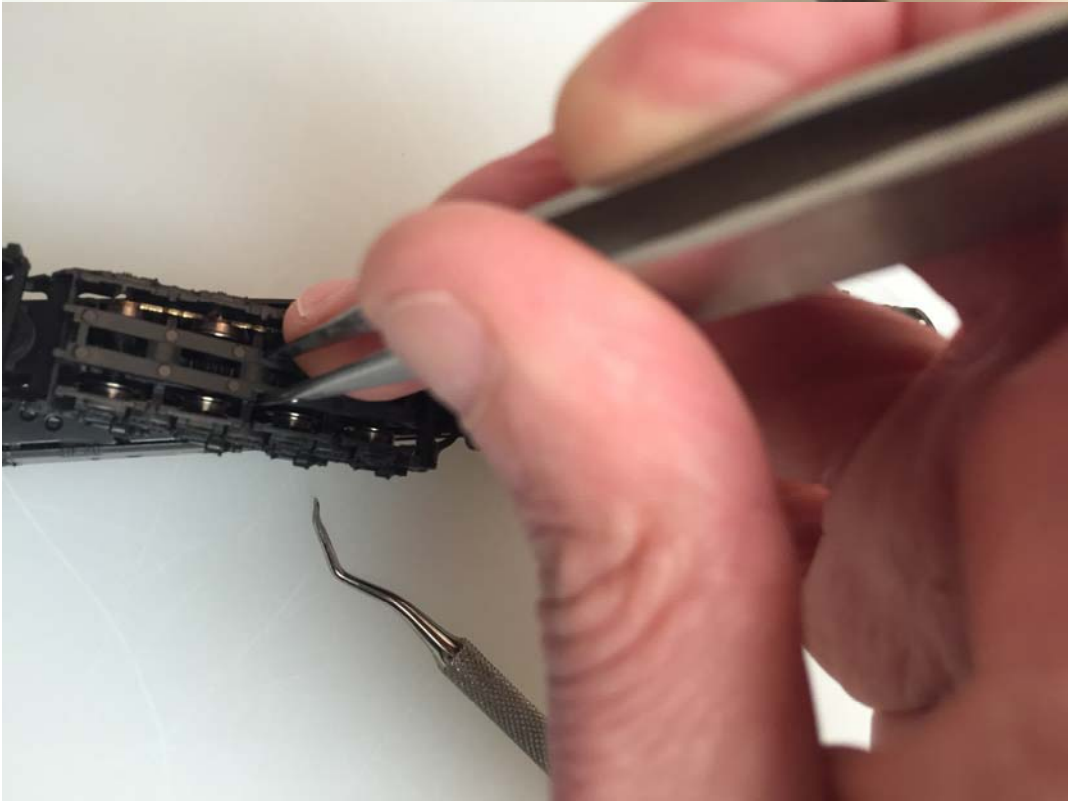
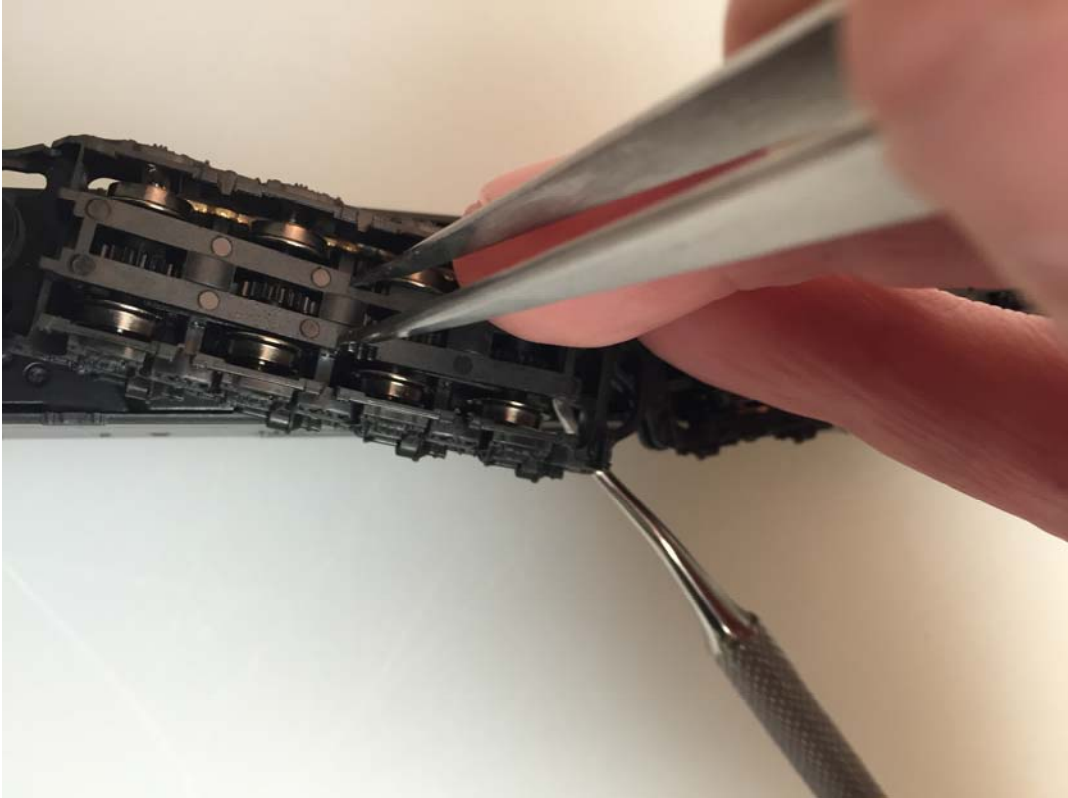
**Step 3:**

At the end of each truck there is a clasp, gently pry and lift it away from the truck.



**Step 4:**

There are two small latches in the center of the truck, un-latch them with a set of tweezers.

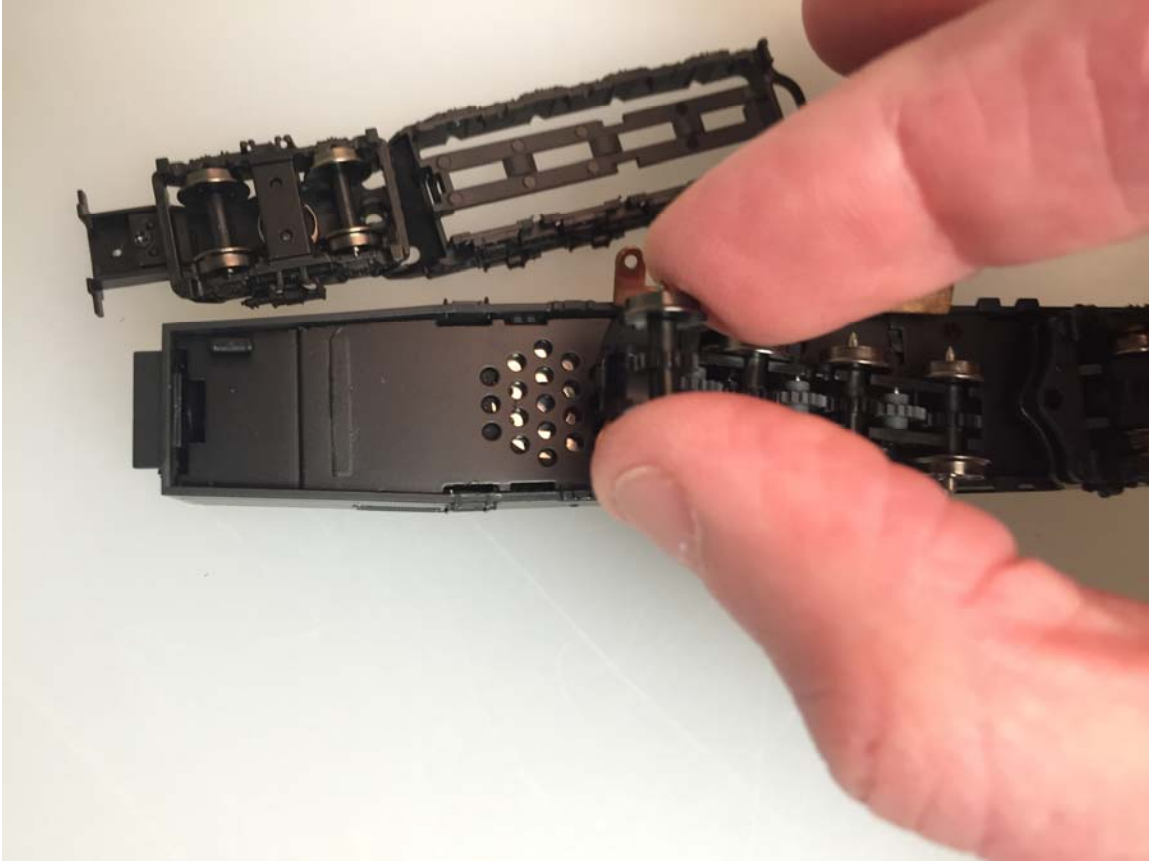


**Step 5:**  
Remove the pickup plates.

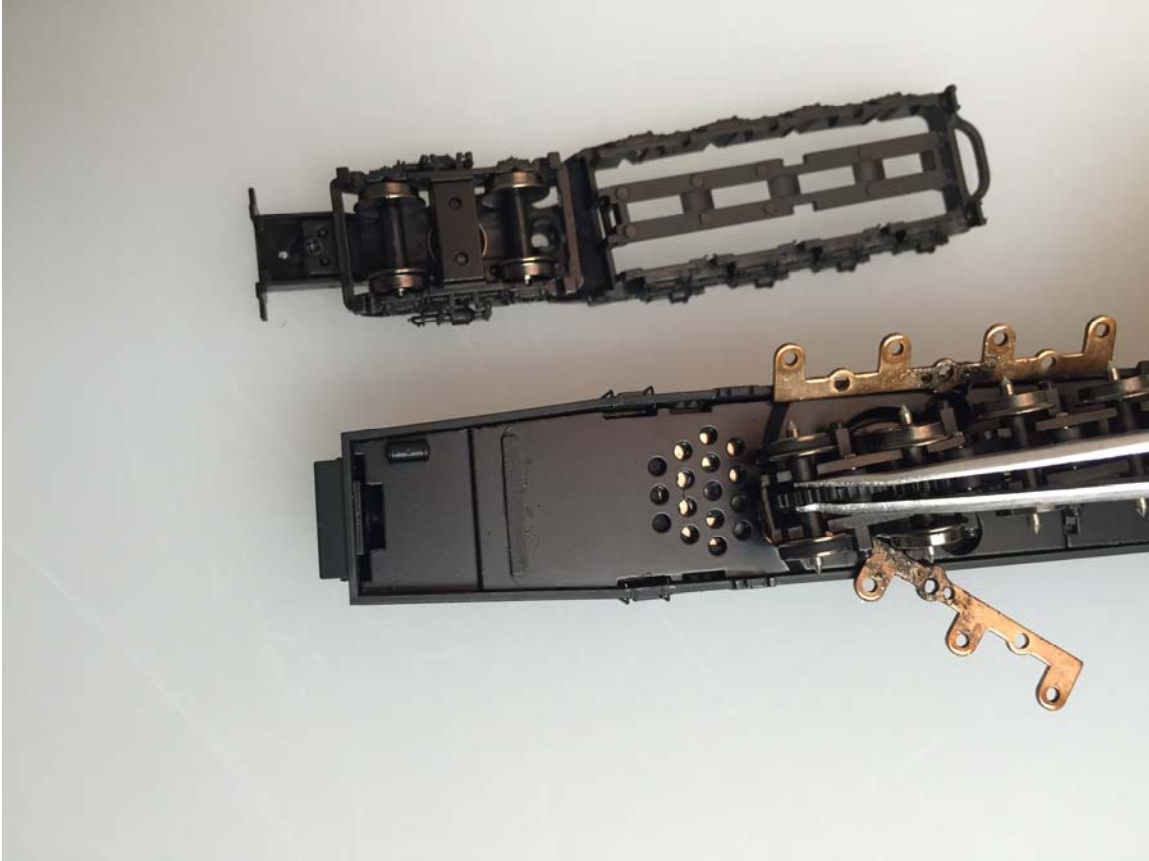


**Step 6:**

Pull the rear-most driver up and out of the gearbox.



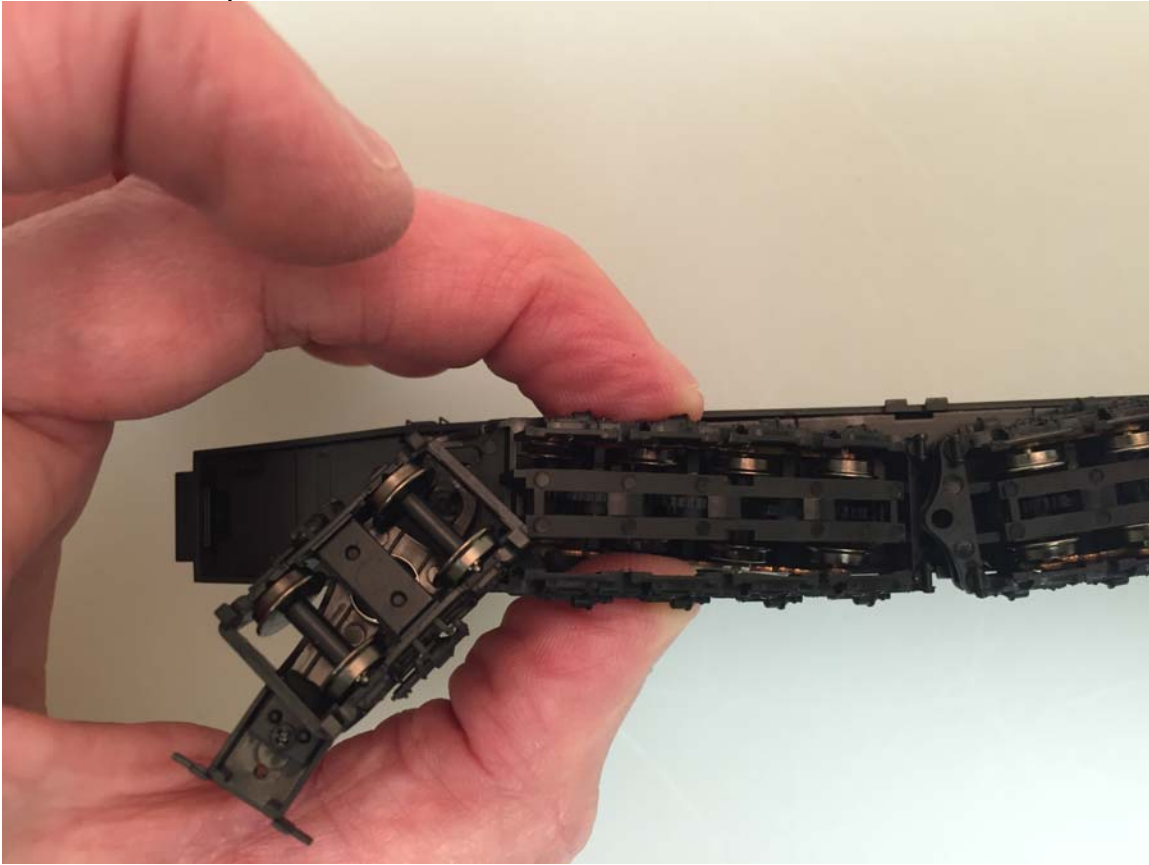
**Step 7:**  
Install the traction-tired driver (just push in).





**Step 8:**

Line up the holes of the copper pickup plates with the pins on the truck and the axle tips of the drivers.

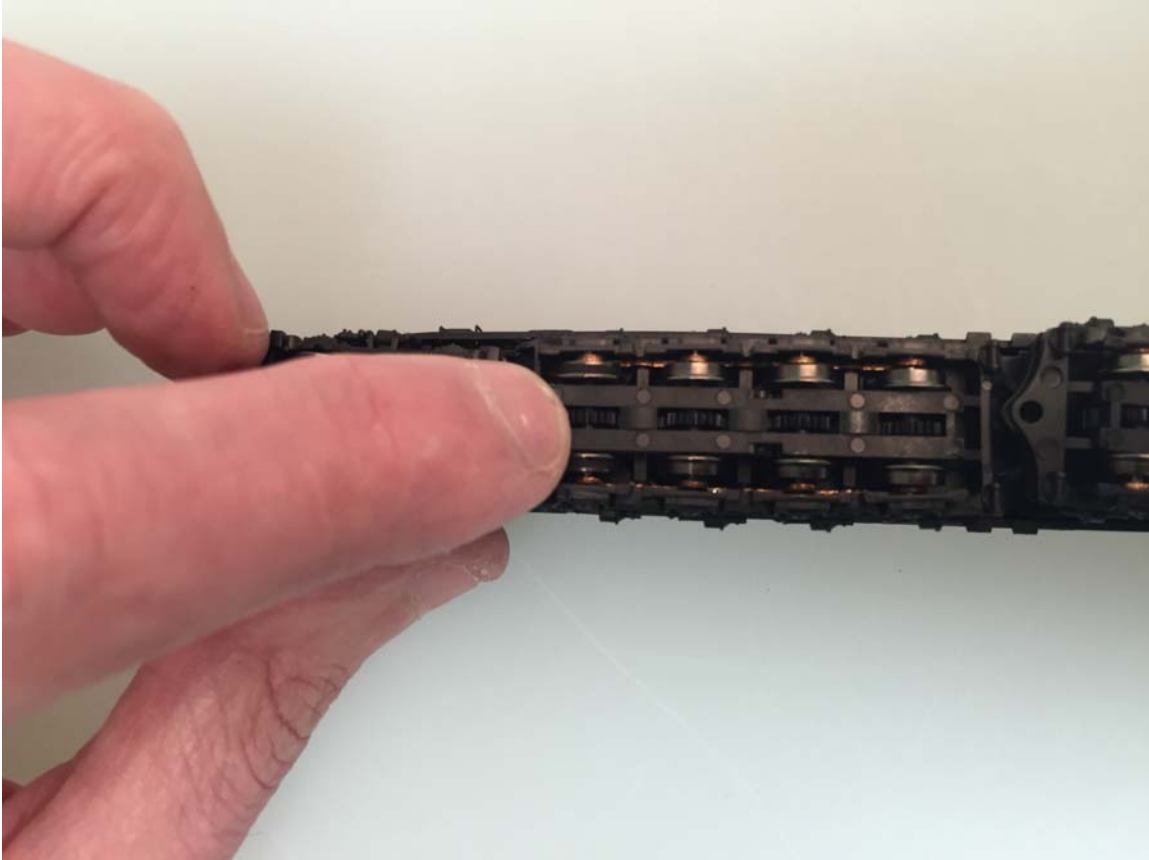


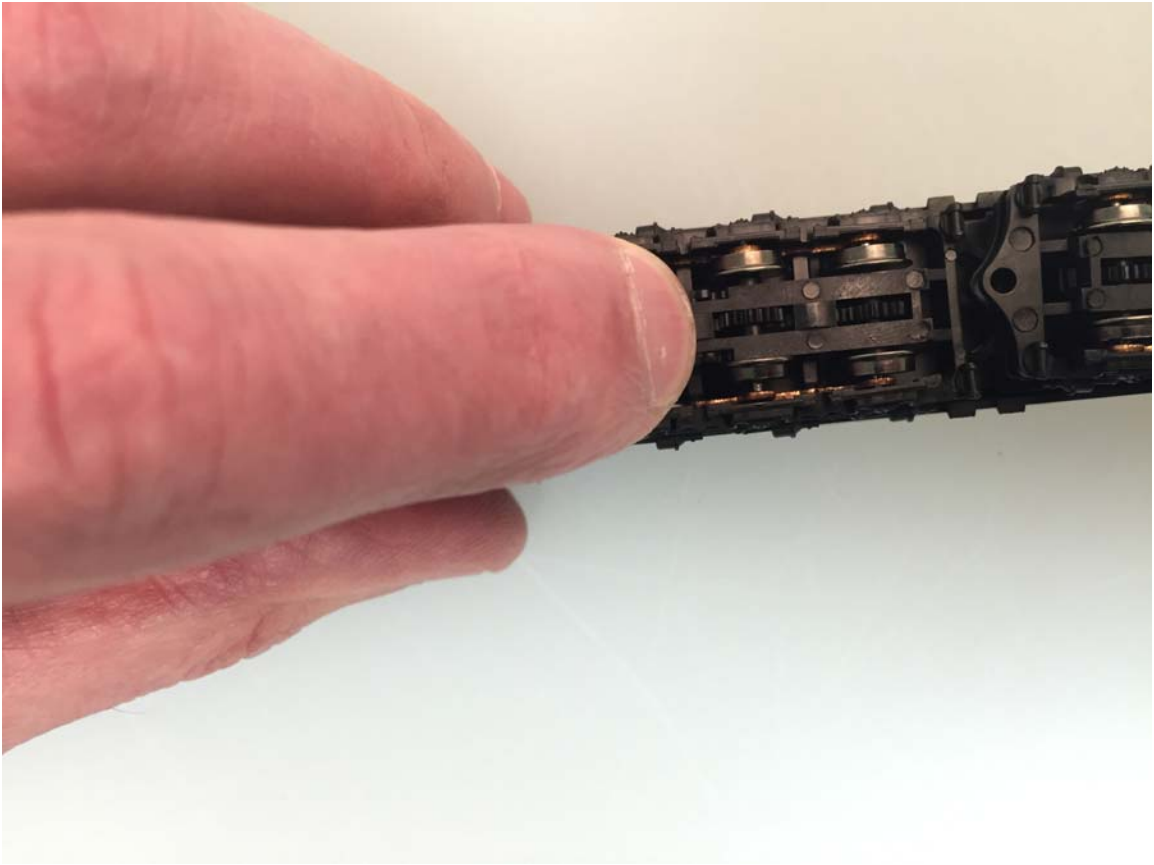
**Step 9:**

Start at one end, and line up the axle tips with the grooves in the sideframe assembly. Also, align the clasp at the end of the truck.

Press down until the sideframe assembly snaps into place on the truck.

Press down on the center so the two latches snap into place, and finally press on the other end to complete re-assembly of the truck.





**Step 10:**  
Re-align the trucks and insert the swivel pin.